

SOCIETY OF AUSTRALIAN SEXOLOGISTS

Membership Prospectus



The Society of Australian Sexologists Ltd represents health and allied health professionals working in the area of sex therapy, sexuality education, sexual health and sexology. We are Australia's leading peak body for the regulation and accreditation of psychosexual therapists and sexuality educators.

membership@societyaustraliansexologists.org.au

accreditation@societyaustraliansexologists.org.au

About Society of Australian Sexologists (SAS)

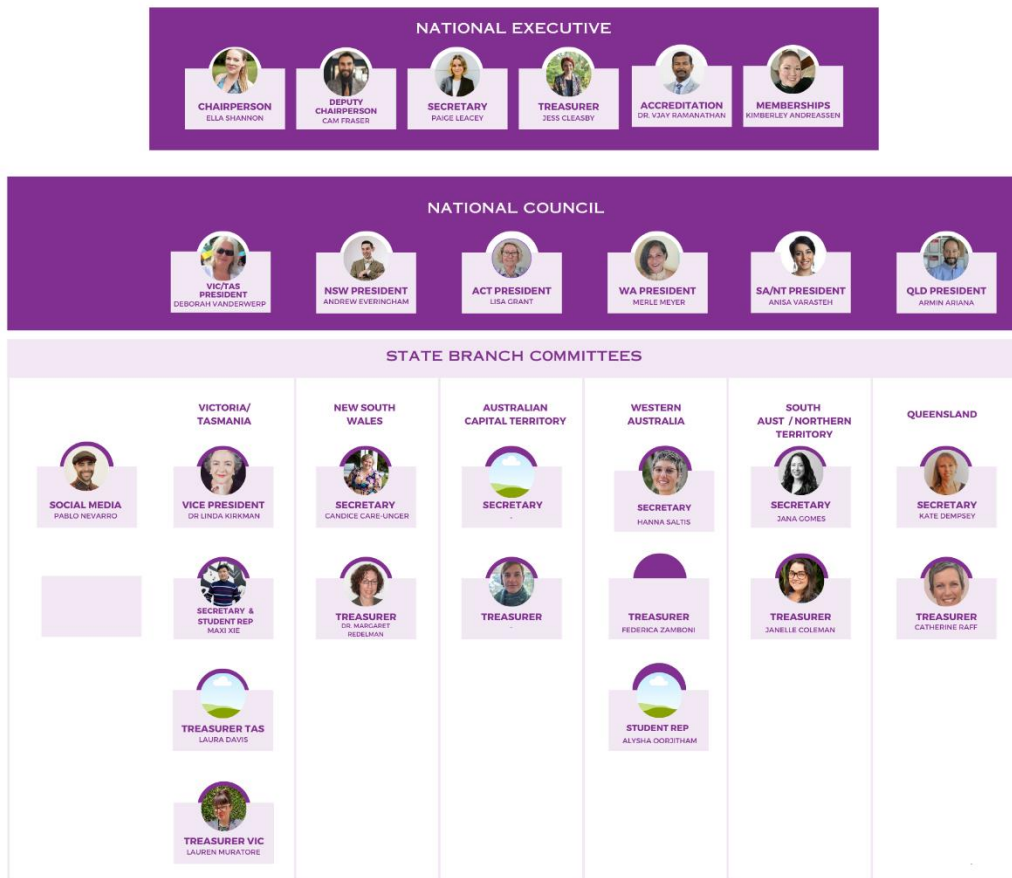
Our **VISION** IS THE POSITIVE INTEGRATION AND ENHANCEMENT OF SEXUALITY IN PEOPLE'S LIVES.

Our **PURPOSE** IS TO BE AUSTRALIA'S LEADING PEAK BODY FOR THE REGULATION AND ACCREDITATION OF PSYCHOSEXUAL THERAPISTS AND SEXUALITY EDUCATORS.



Structure

SOCIETY OF AUSTRALIAN SEXOLOGISTS 2023 ORGANISATION CHART



Our Members

The Society welcomes potential members who are engaged in the field of sexology or human sexuality, including those who have primary professional registration in a number of areas, including professionals such as GPs, Occupational Therapists, Sexual Health Physicians, Social Workers, Psychiatrists, Nurses, Midwives, Psychologists, Counsellors, Psychotherapists, Teachers, Advocates, and students working towards a sexological qualification. Members agree to the aims and objectives of the Society and to abide by the Code of Ethics and Conduct.

People who work as sexologists, particularly in psychosexual therapy and sexuality education, can find themselves working as sole-practitioners in isolation from other professionals. Membership of the Society of Australian Sexologists Ltd (SAS) provides access to professional development, supervision and mentoring, and a community of like-minded individuals who can offer support in your career.

All members agree to adhere to a [code of ethics](#), including that people cannot be members of SAS if they are also working and promoting themselves as a sexological bodyworker. This protects the public from any confusion and maintains strong ethical boundaries and divisions between hands-on and hands-off therapeutic work. We strongly believe there are many ways for people to enhance their sexuality, and sexological bodyworkers workers can play an important role. They also have their own [professional association](#) and Code of Ethics.

Why Join SAS?

All members receive:

- Exclusive offers, including first round ticketing to SAS events
- Reduced registration rates for ASRHA, ASHM, WAS
- Free Affiliate Membership with the Australasian Society for HIV, Viral Hepatitis and Sexual Health Medicine (ASHM)
- Support for your continuing Professional and Career Development/Peer Support
- Professional and Effective Sexual Health and Rights Advocacy
- Ongoing Continuing Professional Learning
- Networking Opportunities with other Sexual Health Professionals
- Free attendance at regular branch meetings
- Free attendance at branch clinical education sessions
- Free branch peer supervision and/or mentorship
- Formal recognition of attendance at events and training

SAS Membership Types



Who can become a Student Member?

To be eligible for student membership, you must be:

Enrolled at a recognised tertiary academic institution in Australia in a qualification aligned with the field of sexology or human sexuality (eg. Social Work, Education, Gender Studies, Psychology)	<u>OR</u>
Studying a Sexology degree from a recognised tertiary academic institution in Australia	

Fees: \$45 Annually paid upon Application *Pro-rata, renewal 1st July each year

(Late fees of \$20 applicable if not paid by 1st August each year)

Note: Membership can take up to 5 weeks to process, and it will not begin to be processed until payment in full is received.

Documents Required for Application:

- Evidence of enrolment in tertiary course (Student Card, Proof of Enrolment Document)
- Curriculum Vitae highlighting passion and/or experience in Sexology
- Referee Reports, please note that students of Curtin University or University of Sydney Sexology programs may use 1 x [Lecturer Referee Letter](#) if a Sexology Lecturer is a referee. All other referees(s) must use 1 x [Standard Referee form](#) (or 2 forms if unable to get a reference from a current SAS member)

Once a Student Member has graduated with a Sexology degree, or they are working in a sexology position, they may upgrade to General Membership (with proof of completed degree or working within the field of Sexology).



Who can become a General Member?

To be eligible for general membership as a sexologist, you must:

Have qualifications from a recognised tertiary academic institution in Australia in an aligned field of sexology or human sexuality (eg. Social Work, Education, Gender Studies, Psychology)	<u>AND</u>
Be working in the field of sexology or human sexuality	<u>OR</u>
Have qualifications from a recognised tertiary academic institution in Australia in Sexology	

The Society welcomes sexologists who have a diverse range of backgrounds. This might include professionals working as; GP's, Occupational Therapists, Sexual Health Physicians, Social Workers, Psychiatrists, Nurses, Midwives, Psychologists, Counsellors, Psychotherapists, Teachers, and in health promotion, research and advocacy.

Fees: \$150 Annually paid upon Application *Pro-rata, renewal 1st July each year
(Late fees of \$20 applicable if not paid by 1st August each year)

Note: Membership can take up to 5 weeks to process, and it will not begin to be processed until payment in full is received.

Documents Required for Application:

- Evidence of graduation from relevant qualification aligned with the field of sexology or human sexuality (eg. Social Work, Education, Gender Studies, Psychology), **and**
 - Curriculum Vitae highlighting experience in Sexology, **and**
- If relevant, evidence of qualifications in Sexology (eg. Curtin University or University of Sydney's Sexology degree(s)), **and**
- 1 Referee Report completed on the [Standard Referee form](#), or 2 forms if unable to get a reference from a current SAS Member



What is an Accredited Member?

There are many people who identify as a sexologist or sexuality expert however, the Society has developed a system of accreditation to ensure the public is protected with trained, qualified and experienced sexologists providing professional sex therapy or sexuality education in Australia. Our accredited members have completed extensive education, have vast experience, and are trained in the speciality.

An Accredited Psychosexual Therapist or Sexuality Educator is:

- A general member in good standing with the society
- Meets the criteria for either Provisional/Clinical [Therapist](#) or [Educator](#)
- Note that sexologists must first become General members before applying for Provisional or Clinical categories of membership

Benefits of Accreditation?

As an accredited Psychosexual Therapist or Sexuality Educator, you will be recognised as a leading professional in your field in Australia. In addition to the benefits of general membership, you will also receive:

- [Featured](#) on the SAS website with picture, bio and contact details
- Ability to promote your accreditation status
- Permission to use the national SAS logo



Honorary Membership

Accredited Honorary Life Members



[Lynda Carlyle](#)



Jocelyn Klug



[Dr Margaret](#)

[Redelman \(OAM\)](#)

Honorary Life Members

Dr Jules Black

Dianne Ervine

Lisa Grant

Diane Summer

Prof Rosemary Coates (AO)

Dr Christopher Fox

Prof Chris McMahon

P.J. Matt Tilley

Relevant Documents

Membership

Curtin and USyd Lecturer only letter: [Referee Letter for Membership](#)

Standard form: [Referee Report for Membership](#)

Accreditation

PSYCHOSEXUAL THERAPIST FORMS

[Psychosexual Therapist Accreditation Application Form](#)

[Psychosexual Therapist Accreditation Criteria](#)

[Psychosexual Therapist RPL Guidelines](#)

[Provisional to Clinical Psychosexual Therapist Application Form](#)

SEXUALITY EDUCATOR FORMS

[Sexuality Educator Accreditation Application Form](#)

[Sexuality Educator Accreditation Criteria](#)

[Sexuality Educator RPL Guidelines](#)

[Provisional to Sexuality Educator Application Form](#)

Policies/Procedures

[Code of Ethics & Practice](#)

[Constitutions](#)

[By-Laws](#)

[Leave of Absence](#)

[Retirement Policy](#)



SOCIETY OF AUSTRALIAN SEXOLOGISTS LTD | ABN: 86163613661
LEVEL 7, 330 COLLINS ST, MELBOURNE, VICTORIA 3000
WWW.SOCIETYAUSTRALIANSEXOLOGISTS.ORG.AU
MEMBERSHIP@SOCIETYAUSTRALIANSEXOLOGISTS.ORG.AU
ACCREDITATION@SOCIETYAUSTRALIANSEXOLOGISTS.ORG.AU